

MULTIMEDIA MASTER

Remote Transmitter & USB Remote Receiver

Owner's Manual



1 Introduction

Congratulations! Your Multimedia Master Remote is a state-of-the-art device which delivers a remote control system to home personal computer at your fingertips.

Before operating the remote, please read thoroughly this manual. Then, reserve it for future reference.

1.1 Key Features

- Pre-programmed with control commands of popular multimedia programs
- 3-in-1 remote allowing functional control up to 3 user programmed multimedia softwares
- Built-in remote ball for replacing PC mouse
- Hard keys for direct program functional access (▶PLAY, ■STOP, ||PAUSE, L, R, NEXT, PREVIOUS)
- Windows OS Master Volume control and Shut down
- Easy set up

Note:

This equipment has been tested and found to comply with limits for a Class B digital device, pursuant to Part 15 of the FCC Rules. These limits are designed to provide reasonable protection against harmful interference in a residential installation. This equipment generate, use and can radiate radio frequency energy and, if not installed and used in accordance with the instruction, may cause harmful interference to radio communication. However, this is not guarantee that interference will not occur in a particular installation. If this equipment does cause harmful interference to radio or television reception, which can be determined by turning the equipment off and on, the user is encouraged to try to correct the interference by one or more of the following measures:

- Reorient or relocate the receiving antenna.
- Increase the separation between the equipment and receiver.
- Connect the equipment into an outlet on a circuit different from that to which the receiver is connected.
- Consult the dealer or an experienced radio/TV technician for help.

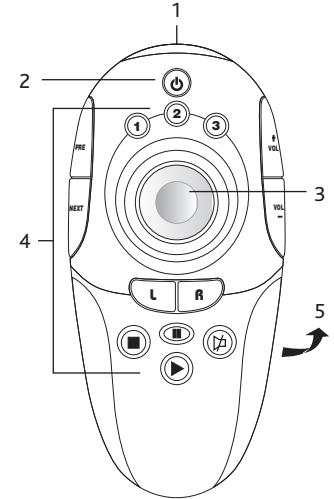
"Modifications not authorized by the manufacturer may void users' authority to operate this device."

"In case of any electrostatic discharge, the product may not be working properly. The user has to connect the USB cable again to resume the operation."

1.2 Getting to know your Multimedia Master Remote

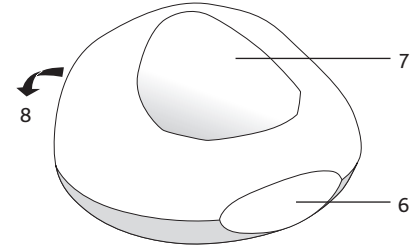
Remote Transmitter Unit

1. Infra-red lens
2. LED indicator/Windows OS shut down
3. Remote ball
4. Hard keys
5. Battery compartment



USB Remote Receiver Unit

6. Infra-red lens
7. Remote holder
8. USB connection jack



1.3 Specifications

Operating system: For Windows 98SE, 2000 and XP
Compatibility: Preprogrammed with popular multimedia programs, see compatible program list

Operating distance: 8 metres (25 feet)

Power requirement: 2 x AA batteries (alkaline is recommended)
(for Transmitter)

Dimensions

Remote Transmitter: 127 x 60 x 38 mm

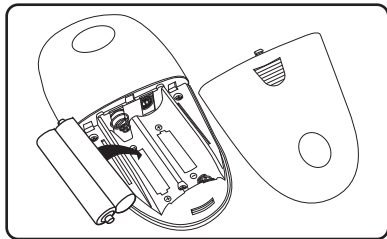
USB Receiver: 90 x 80 x 48 mm

Weight: 140g (with batteries installed)

For improvement purposes, specifications and functions are subjected to change without priority notice.







1.4 How to install batteries for Remote Transmitter unit

- Open the battery cover.
- Follow the polarity symbol shown in the battery compartment.
- Place the batteries inside.
- Replace the battery cover.



2 Getting start

2.1 Remote key function list

- | | | | | | |
|---|---|------------------|---|---|-------------------|
| • |  | PC shut down | • |  | Stop playback |
| • | 1/2/3 | Program start | • |  | Pause playback |
| • | PRE | Previous chapter | • |  | Playback |
| • | NEXT | Next chapter | • |  | Audio mute |
| • | VOL+ | Volume up | • |  | Mouse left click |
| • | VOL- | Volume down | • |  | Mouse right click |

3 How to set up the Multimedia Master Remote

3.1 Set up your Multimedia Master Remote

- Install the provided software and device driver first and follow the on-screen instructions.
- After installed the software and device driver, restart your computer system.
- Connect the USB Remote Receiver Unit with the provided USB cable to one of the available USB port on your computer system. Place your USB Remote Receiver Unit to a free area near your PC monitor.
- You can see the Multimedia Master Remote icon on the Windows toolbar is active.
- Select the installed Multimedia program to be controlled by your Multimedia Master Remote by double clicking the Multimedia Master Remote icon (Device Setup dialogue box) on the Windows toolbar.
- Select your installed Multimedia software by clicking the " **Application** " box and input the correct program path.
- Select " **Finish** " and close the Multimedia Master Remote Device Setup dialogue box.
- You are now ready to use your remote.

IMPORTANT:

Compatible program list:

Only the below listed programs are compatible for your Multimedia Master Remote:

Windows Media Player 6x, 7x, 8x, 9x

WinAmp 2.0, 3.0

CyberLink Power DVD 4.0/5.0

4 Operating your remote

4.1 Normal Operation

Once you have setup the remote for your computer system, it operates like a wireless remote control handset of your computer system. Just aim it at your computer, press an appropriate Program Key to invoke the desired program. By pressing a corresponding key on the remote to invoke the desired function. The indicator flashes during signal transmission.

4.2 Shut down your Windows

You can simply press **⏻** to pop up the system shut down dialogue box. Select “ **Shut down** ” to turn off your computer system.

5 Maintenance

- Do not expose your remote and receiver to dust, strong sunlight, humidity, high temperature, or mechanical shock.
- Do not use old and new batteries together as old batteries tend to leak.
- Do not use corrosive or abrasive cleansers on your remote and receiver.
- Keep the unit dust free by wiping it with a soft, dry cloth.
- Do not disassemble your remote and receiver, they contain no user-serviceable parts.

6 Troubleshooting

Q: My remote does not work at all !!!

- A : Check whether your batteries are inserted properly and are in correct +/- marks.
A : If the batteries are weak, replace the batteries. See “ **1.4 How to install batteries for Remote Transmitter unit** ”.
A : Check if you have installed the provided software and device driver.
A : Check whether your USB Remote Receiver Unit is connected to an available USB port of your computer.

Q: I cannot activate any multimedia program.

- A : Check if you have configured the control programs from the setup dialogue box by clicking the Multimedia Master Remote icon on the Windows toolbar.
A : Check if you have selected a wrong program path for executing your program.
A : Check if you have selected the non-compatible programs from the **COMPATIBLE PROGRAM LIST**.

Q: My multimedia program responds only to some of the commands.

- A : You have set a wrong version of the suggested software. You have to check the setup dialogue box and re-configure again.

BW6130 MANUAL UPDATE (Nov 1, 2004)

1) Quick Setup Guide:

Please follow the below steps to setup your Multimedia Master Remote

- a. Install the provided software and device driver first and follow the on-screen instruction.
- b. After installed the software and device driver, restart your computer system.
- c. Connect the USB Remote Receiver Unit with the provided USB Cable to one of the available USB port on your computer system. Place your USB Remote Control Receiver Unit to a free area near your PC monitor.
- d. You can see the Multimedia Master Remote icon on the Window toolbar is active.
- e. Select the installed Multimedia program to be controlled by your Multimedia Remote icon (Device Setup dialogue box) on the Window toolbar.
- f. Select your installed Multimedia software by clicking the "Application" box and input the correct program path. ****(Note)**
- g. Select "Finish" and close the Multimedia Master Remote Device Setup dialogue box.
- h. You are now ready to use your remote.

Note:

If you are not able to provide the correct program path, please:

- Move the mouse cursor to the "Start" button on the Window tool bar.
- Left Click and move to "Program"
- Move the mouse cursor to your target program then right click.
- Select "Properties" and left click
- Go to the shortcut page
- On the Target bar, you will be able to find the correct program state up path within the two invert commas "".

e.g. "C:\Program Files\Windows Media Player\mplayer2.exe",

-Follow and input this path into the Multimedia software (NOT INCLUDED THE INVERT COMMAS) and press the dialogue box and you will see that you have successfully input the right path.

2) Compatible program list:

The below listed programs are compatible with your Multimedia Remote, we will keep up-date our compatible program list frequently and provide new version of PC software in our webpage:

<http://www.remotec.com.hk/eng/tech.htm>

We highly recommend our customer to visit our website frequently to download the latest software.

1. Winamp 2 /3 /5
2. Windows Media Player 6
3. Windows Media Player 7 /8 /9
4. Windows Media Player 7 /8 /9 (skinned mode)
5. Power DVD 4 /5
6. Real Player 10
7. Direct DVD 5
8. Win DVD 5
9. Musicmatch Jukebox 8
10. Sonique 1.9
11. Foobar 2000
12. JetAudio 6
13. Media JukeBox 8
14. Quintessential Player 4
15. Power Cinema 3
16. Microsoft PowerPoint 2000/2002/2003

MultiMedia Remote Control User Guide

Please follow the below steps for installation of your MultiMedia Master remote.

- 1) [Software and Driver Installation](#)
- 2) [Setup the MultiMedia Master Remote Control](#)
- 3) [Using the Multimedia Master Remote Control](#)
- 4) [FAQ](#)

Chapter 1 – Software and Driver Installation

1- **Do not connect your MultiMedia Master remote control until the software and driver is installed.**

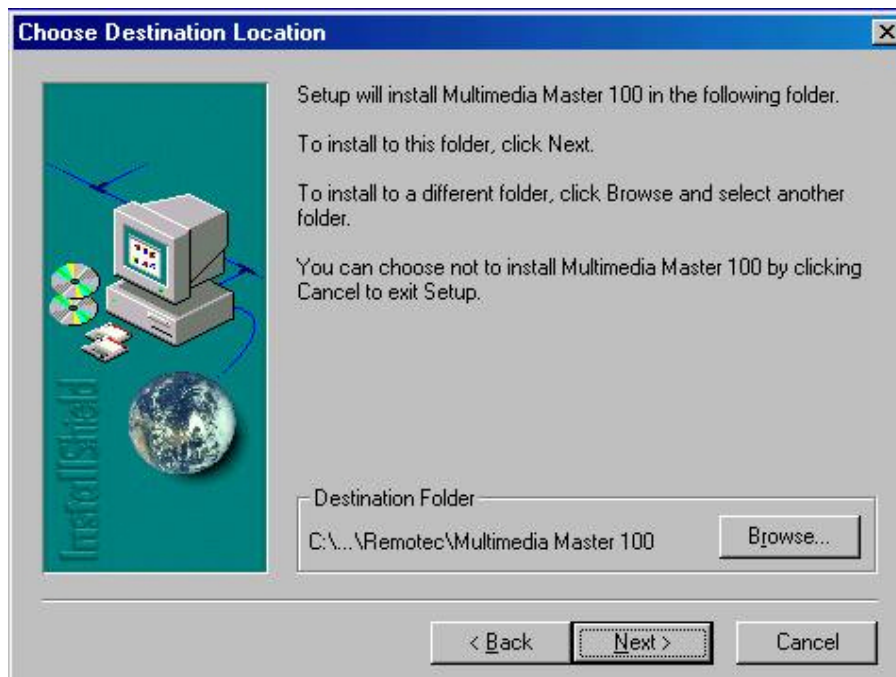
2- Insert the installation CD Disk into your CD Drive, and select the file “setup.exe”



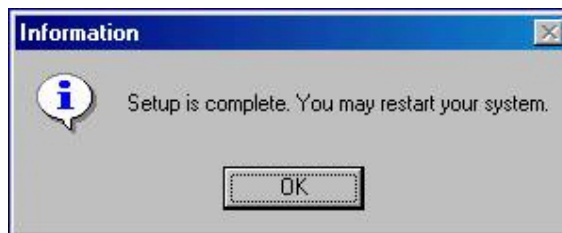
3- Then, a dialogue box should pop up and tell you that you must not run any Multimedia Master Remote Control software while the installation process is commenced. Please ensure that you have not installed ANY Multimedia Master software before and click 'Yes'.



4- Click 'Next' to continue.



5-You can specify a Destination to install the software of Multimedia Master Remote Control, or use the suggested default path.



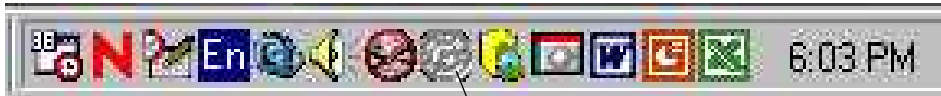
6- The software will start to install and should take about 2 minutes for the installation process.



7. Restart your computer to update the necessary configuration of your Windows system. The software installation is completed.

Chapter 2 - Setup the MultiMedia Master Remote Control

After the computer is re-started, you should be able to see a new icon on your windows tool bar. This icon should be blurred, as your MultiMedia Master remote control set has not yet connected to your computer.



Icon for Multimedia Master 100

You can now connect your Multimedia Master remote control (Receiver unit) to your computer via the provided USB cable and one of the available USB port from your computer. Do not forget to insert a pair of new AA batteries into your Multimedia Master remote (Transmitter unit).

As this is the first time you connecting your MultiMedia Master remote control to your computer, a dialogue box will pop up and inform you that a new USB device has been detected.



Click 'Next' to start the installation of the device driver.



Select the option "Search for the best driver for your device."



Keep the Installation CD disk of the MultiMedia Master in your CD Drive, and click the option 'CD-ROM drive', then 'Next'.

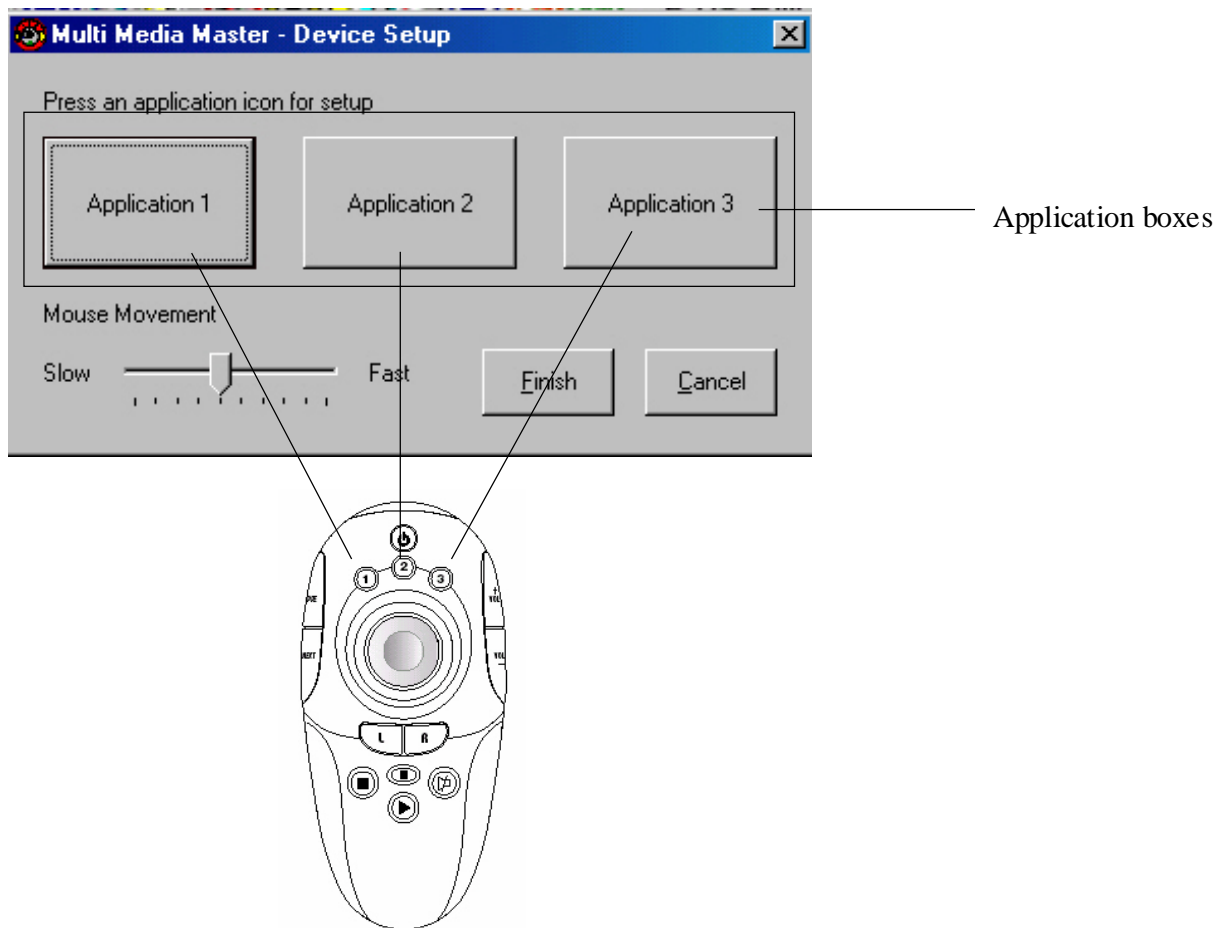


Your computer should be able to locate the driver for the device, click 'Next' to continue the installation of the device driver.



**Icon for Multimedia Master
100**

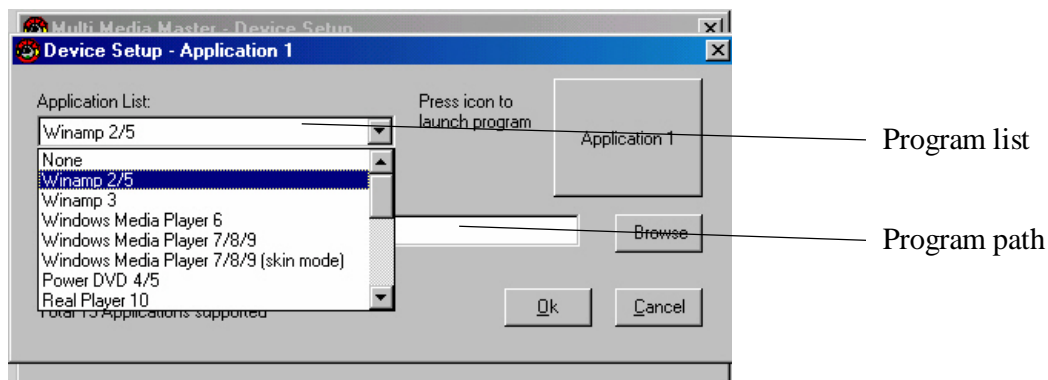
Now you can see the icon of the Multimedia Master remote control is active. You may now start to setup the MultiMedia Master remote control program. Just simply double click the icon of Multimedia Master, the below setting dialogue box will pop up.



In this dialogue box, you can see that there are 3 application boxes which represent what software that you will use to control by the program key '1', '2', '3' on your MultiMedia Master remote.

Now you need to setup each application box one by one, e.g. WinAmp for listing MP3/CD Music, then assign WinAmp to Program Key 'Application 1'.

Click the 'Application 1' box and the below dialogue box will pop up.



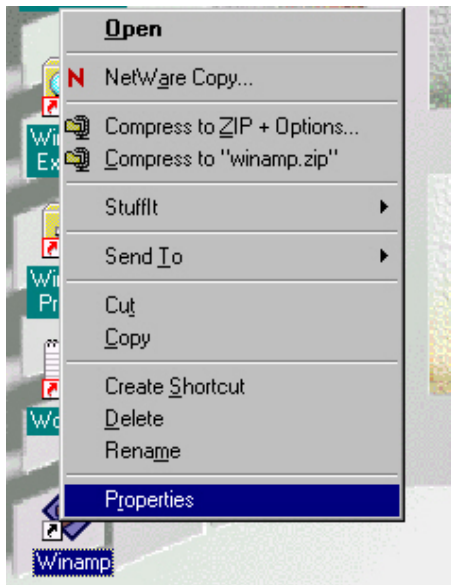
On the above illustration, there are two fields that we need to input, the first one is the program list - this is telling what software that the Multimedia Master is supporting and which program master should be selected, e.g. 'WinAmp 2/5'.

The second setting is instructing the location of the corresponding execution file of the selected program.

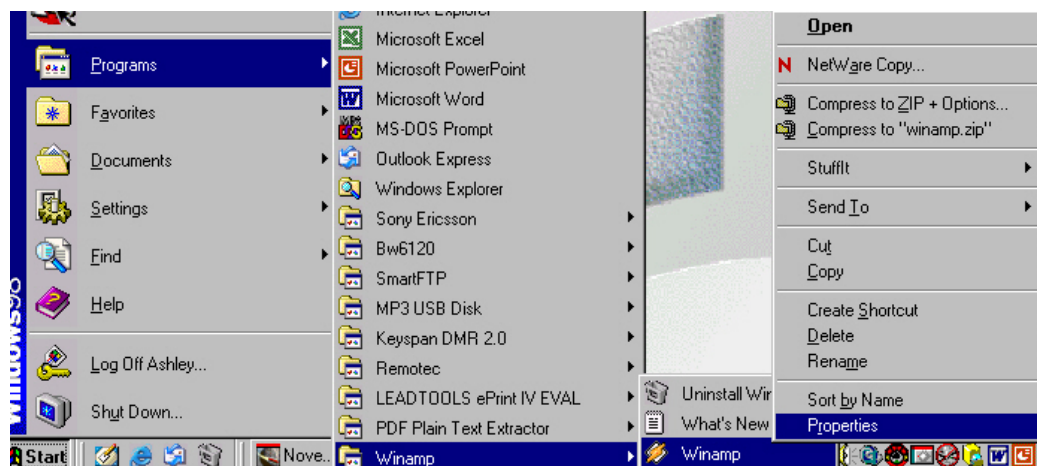
For each media softwares, it should have an execution file to start up with. Simply we have already provided the default path for those software. If you have changed the path during the installation of the Media Player software (e.g. WinAmp 5), you need to input the correct path manually, e.g. Winamp was installed in the drive "D:\winamp\winamp.exe" instead of the default path "C:\PROGRAM FILES\WINAMP\WINAMP.EXE", so you have to type manually the path for the execution file.



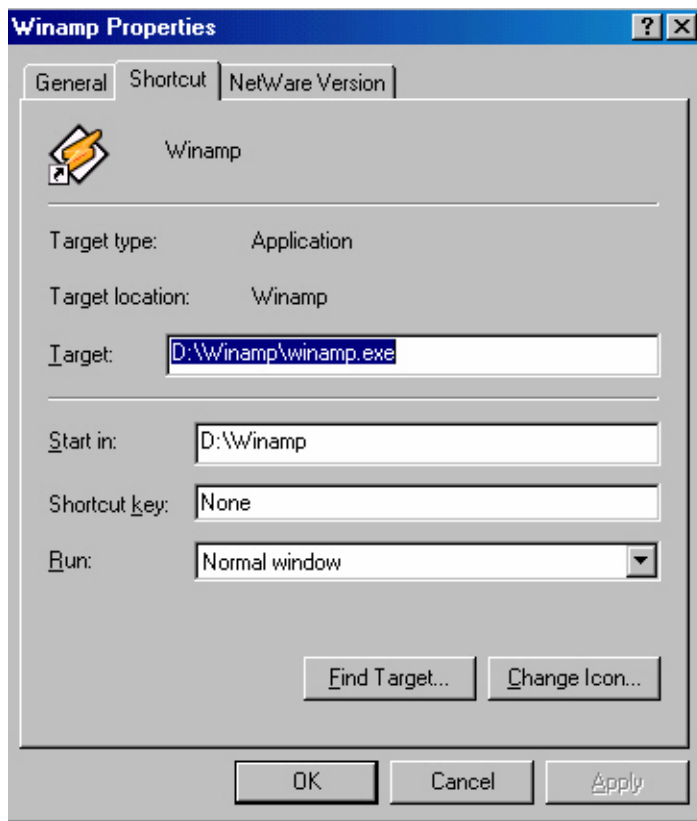
There are two ways to find out the execution path for the media program path:



You can either right click from the shortcut icon from the desktop, or



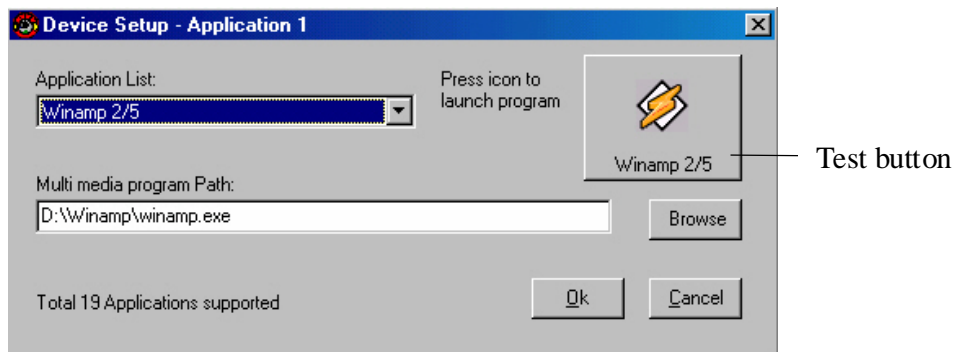
Go to 'Programs' from the start menu, point to the winamp execution file under windows program bar, right click and select 'Properties'.



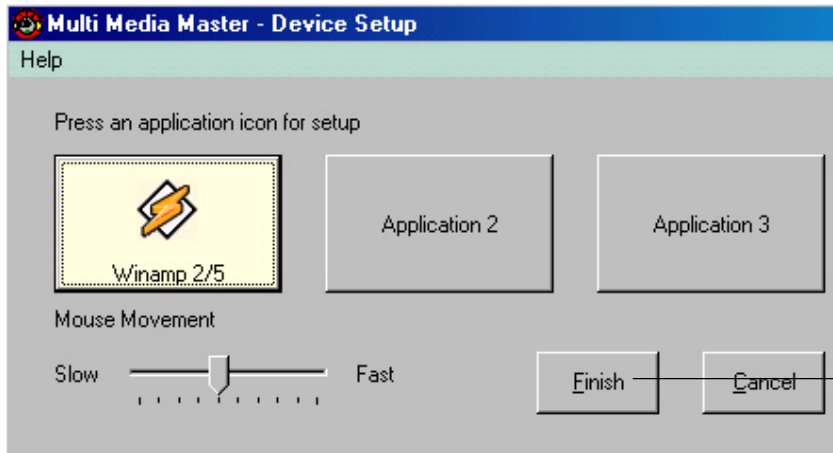
Under the 'Shortcut' folder, you can see the execution path from the "Target" row.



Just copy the content of the Target column and paste on to the Multimedia Master program.



You can now click the test button to check if you have input the right execution path or not. The Winamp player should be started after you pressed the Test button.

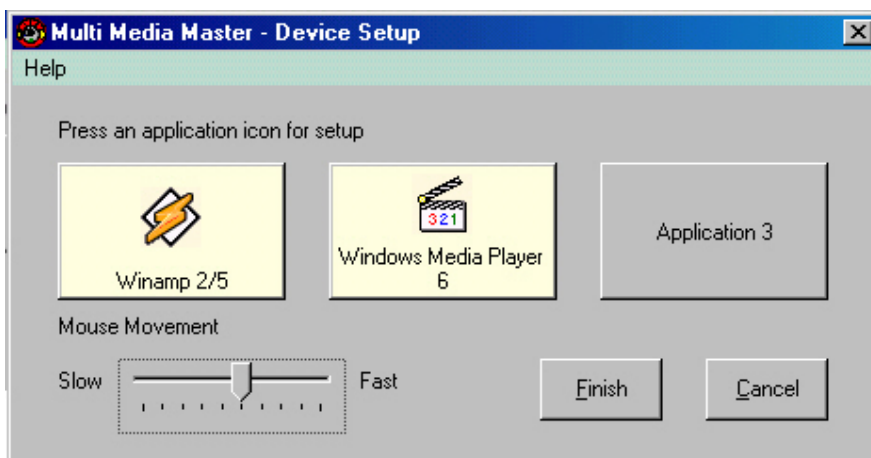


Finish Button (Important!!)

Just follow the above above steps to setup the other Application keys. After that, **do not forget to press the 'Finish' Button to save the setting before you quit.**

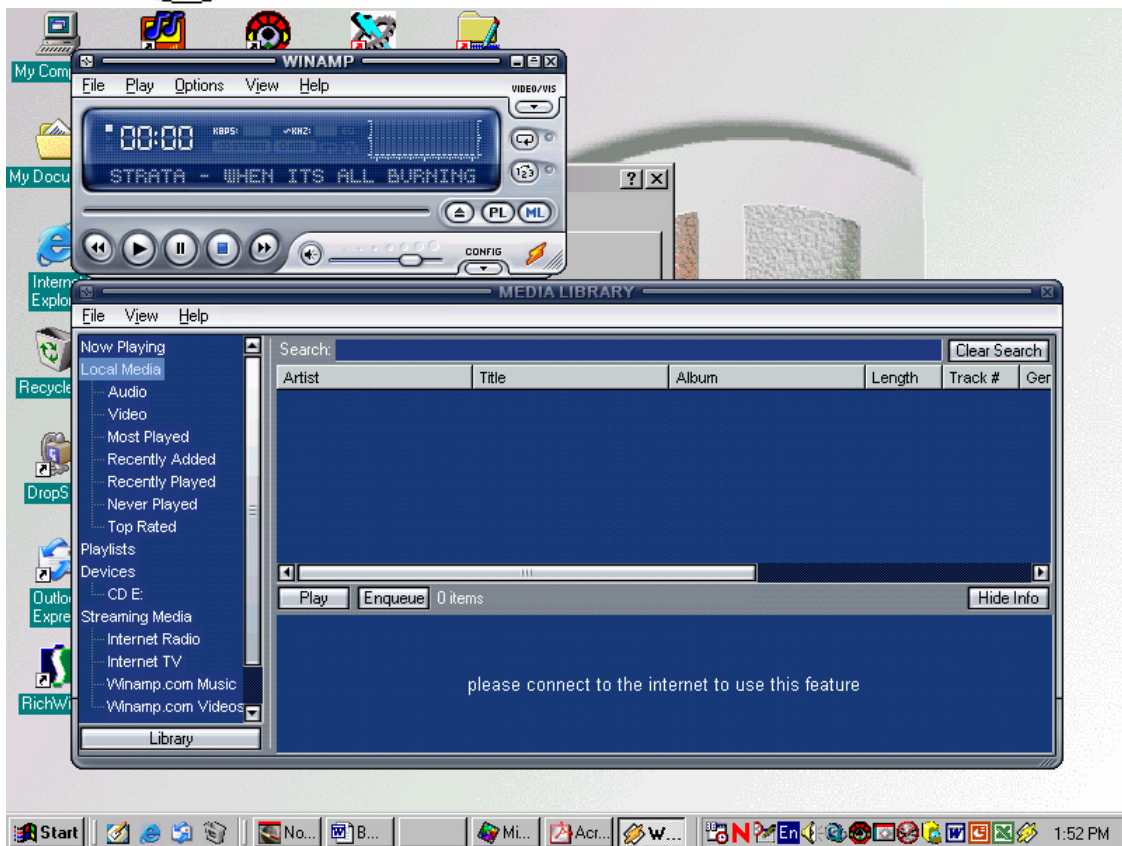
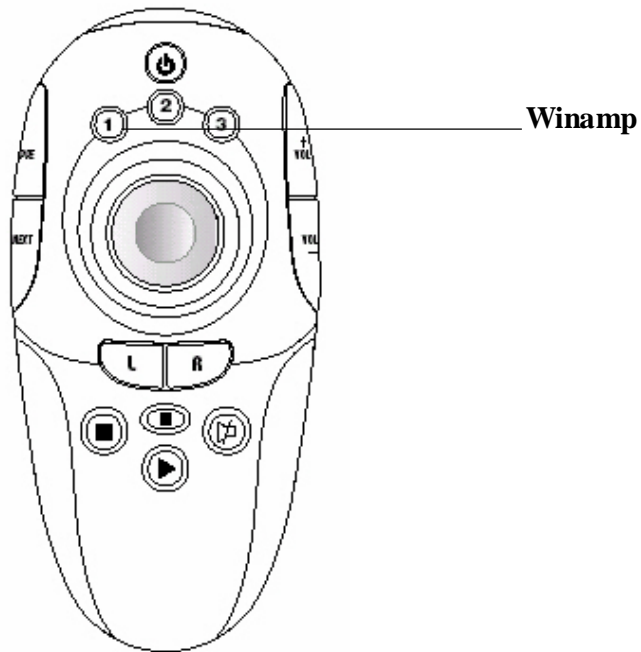
[Chapter 3 - Using the MultiMedia Remote Control](#)

In this example, I am currently using Winamp for MP3 music and Window Media Player 6 for movie, and my setting is showing as below:



In the setup option, I have selected 'Application 1' button for Winamp 5 program.

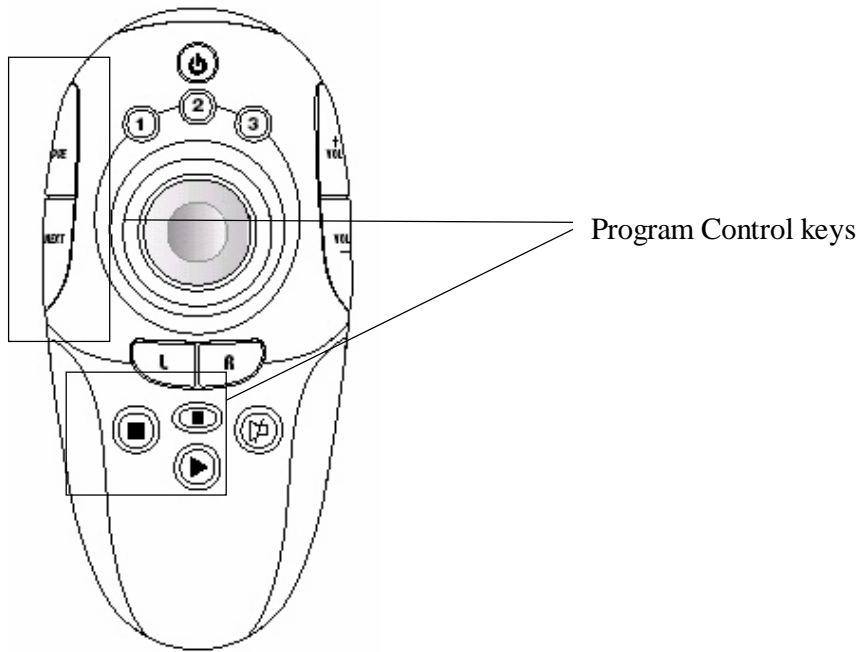
I can now press the program button 1 on the remote control to execute the Winamp program. **Important: For every time you want to control the Multimedia software, you need to press the proper program key in order to execute the software or pick them into the front page of the your window platform.**



Now I can start to control the WinAmp player, with the below function keys:

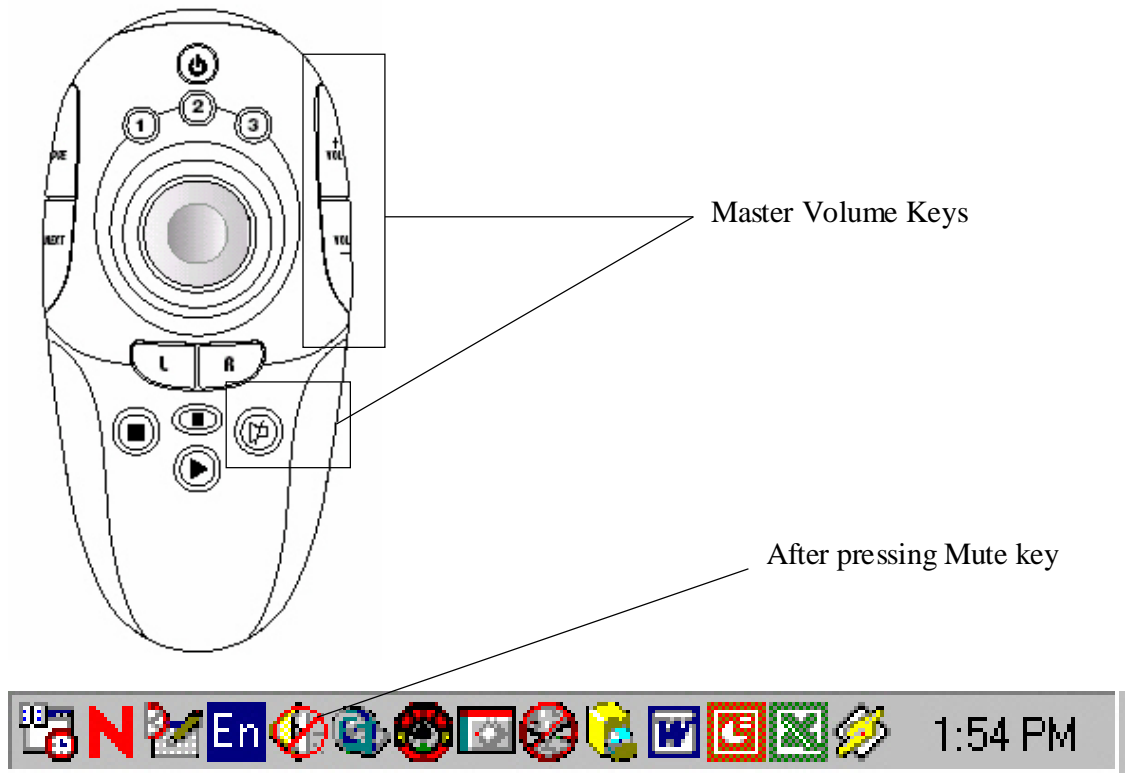
A) Media Player function keys

- 1) Play;
- 2) Stop;
- 3) Pause;
- 4) Previous;
- 5) Next.



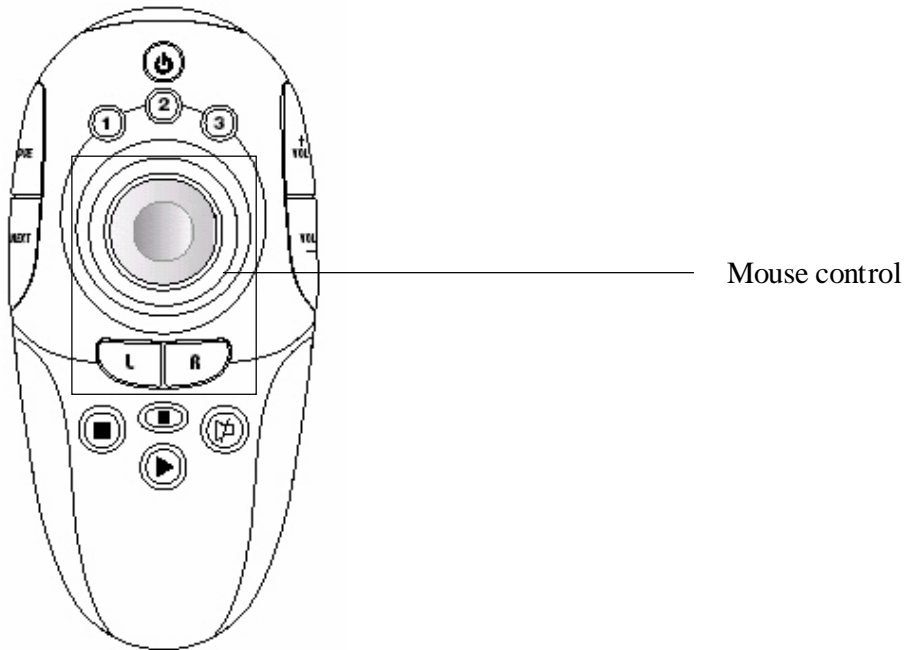
B) Master Volume Keys

Or the Master Volume Keys, they are directly controlling the Windows master output volume instead of the volume control under the media software. (e.g. Press the 'mute' key on the remote control and you could see that the speaker icon is showing Mute on the windows tool bar.)

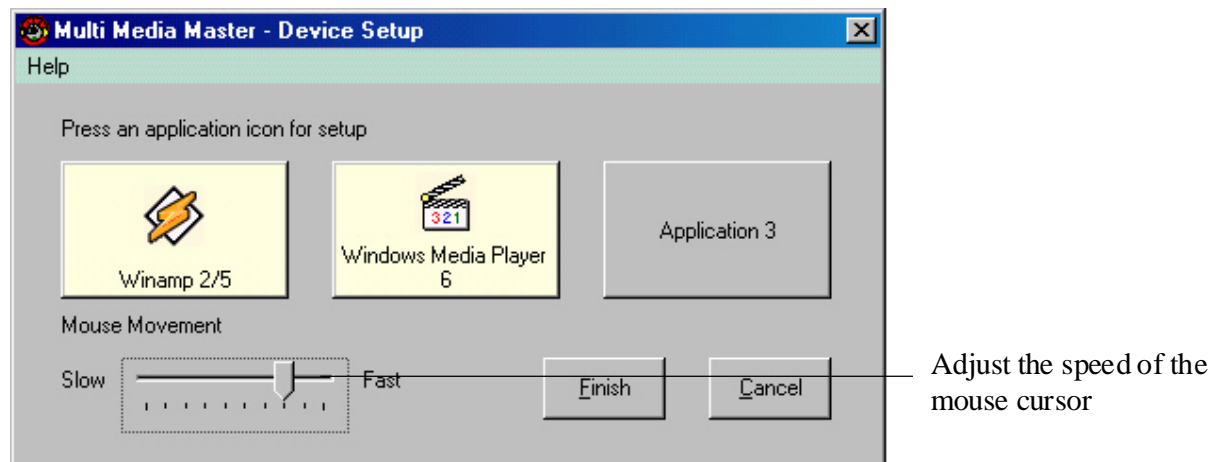


C) Remote Ball

You can use the analog remote ball for controlling the mouse cursor. The L/R button to perform the Left / Right mouse click function, also the left click can be performed if you apply a short-press to the mouse ball.

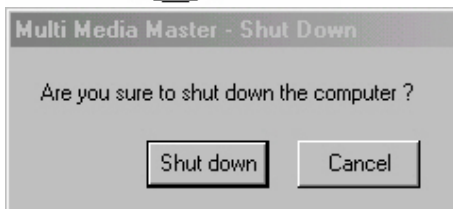
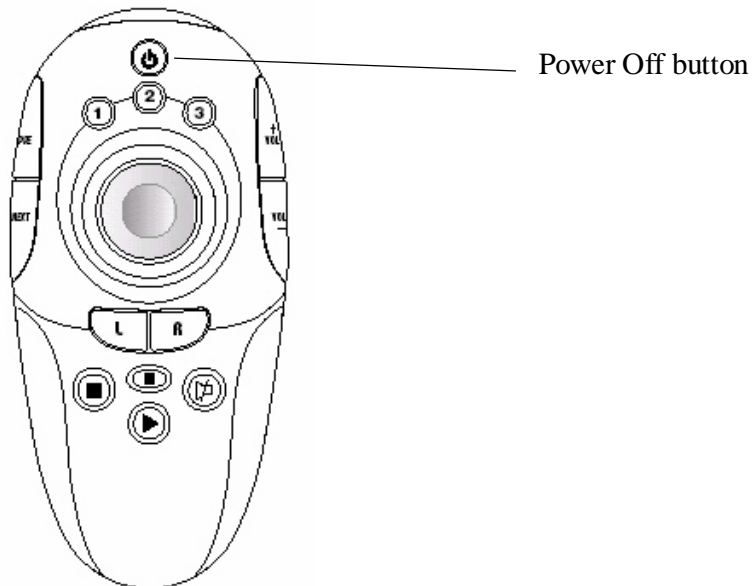


The speed of the mouse cursor can be adjusted in the setup page as below:



D) Power Off Button

You could switch off your computer by this button. After a short-press of it, a shut down dialogue box will pop up. Simply confirm to turn off your computer.



Chapter 4 - FAQ

Q : My remote does not work at all !!!

A : Check whether your batteries are inserted properly and are in correct +/- marks.

A : If the batteries are weak, replace the batteries. See “ **1.4 How to install batteries for Remote Transmitter unit** ”.

A : Check if you have installed the provided software and device driver.

A : Check whether your USB Remote Receiver Unit is connected to an available USB port of your computer.

Q : I cannot activate any multimedia program.

A : Check if you have configured the control programs from the setup dialogue box by clicking the Multimedia Master Remote icon on the Windows toolbar.

A : Check if you have selected a wrong program path for executing your program.

A : Check if you have selected the non-compatible programs from the **COMPATIBLE PROGRAM LIST**.

Q : My multimedia program responds only to some of the commands.

A : You have set a wrong version of the suggested software. You have to check the setup dialogue box and re-configure again.

Q: What kind of multimedia program is compatible to MultiMedia Master remote?

A: The below listed programs are compatible with your Multimedia remote

1. Winamp 2 /3 /5
2. Windows Media Player 6
3. Windows Media Player 7 /8 /9
4. Windows Media Player 7 /8 /9 (skinned mode)
5. Power DVD 4 /5

6. Real Player 10
7. Direct DVD 5
8. Win DVD 5
9. Musicmatch Jukebox 8
10. Sonique 1.9
11. Foobar 2000
12. JetAudio 6
13. Media JukeBox 8
14. Quintessential Player 4
15. Power Cinema 3
16. Microsoft PowerPoint 2000/2002/2003

~End of the MultiMedia Remote Control User Guide~